



**FULLY REFURBISHED TWO
BED DUPLEX APARTMENT
WITH PARKING**

£434,000

Full refurbishment

Two bedroom

Large living areas

Separate integrated kitchen

RESIDE Modern bathroom

Dedicated parking

Walking distance to all amenities

Flat 4, St Roche Apartments,
Raleigh Avenue, JE2 3UW

Asking price £434,000



FLYING FREEHOLD - Reside are pleased to offer St Roche Apartments, a character block of 4 spacious 2 bedroom units all with parking, fully refurbished and finished to a high standard throughout on Rayleigh Avenue.

All apartments briefly comprise; A large living area, separate newly fitted kitchens with integrated Bosch appliances, two double bedrooms and modern bathrooms.

Unit 4 is a top floor duplex apartment with plenty of natural light and large living spaces.

This property is conveniently located on a quiet residential road in St Helier, and is within walking distance to the town centre and local amenities.

Externally the apartment comes with a one designated parking spaces.

St Roche apartments offer exceptional value with all units priced to sell and are not to be missed. Viewings are highly recommended by the exclusive agent.

Buy through Reside to receive a £4,000 Home and Style Voucher



reside.je



info@reside.je



07797737773



reside.je



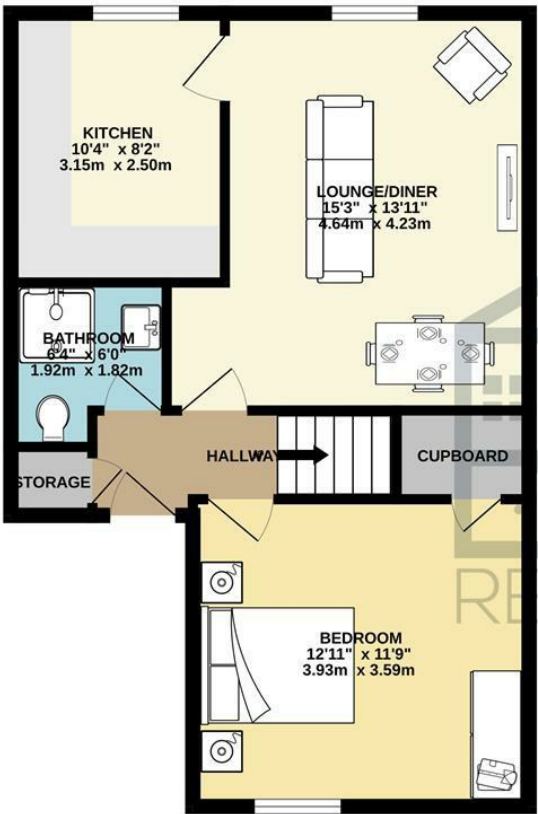
info@reside.je



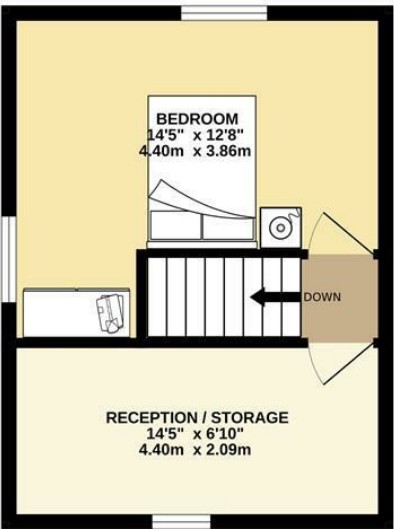
07797737773

Floor Plan

GROUND FLOOR
526 sq.ft. (48.8 sq.m.) approx.



1ST FLOOR
282 sq.ft. (26.2 sq.m.) approx.



TOTAL FLOOR AREA : 808 sq.ft. (75.0 sq.m.) approx.
Whilst every attempt has been made to ensure the accuracy of the floorplan contained here, measurements of doors, windows, rooms and any other items are approximate and no responsibility is taken for any error, omission or mis-statement. This plan is for illustrative purposes only and should be used as such by any prospective purchaser. The services, systems and appliances shown have not been tested and no guarantee as to their operability or efficiency can be given.
Made with Metropix ©2025



reside.je



info@reside.je



07797737773

Key Information

Directions

